

# Locus Sustainable Construction



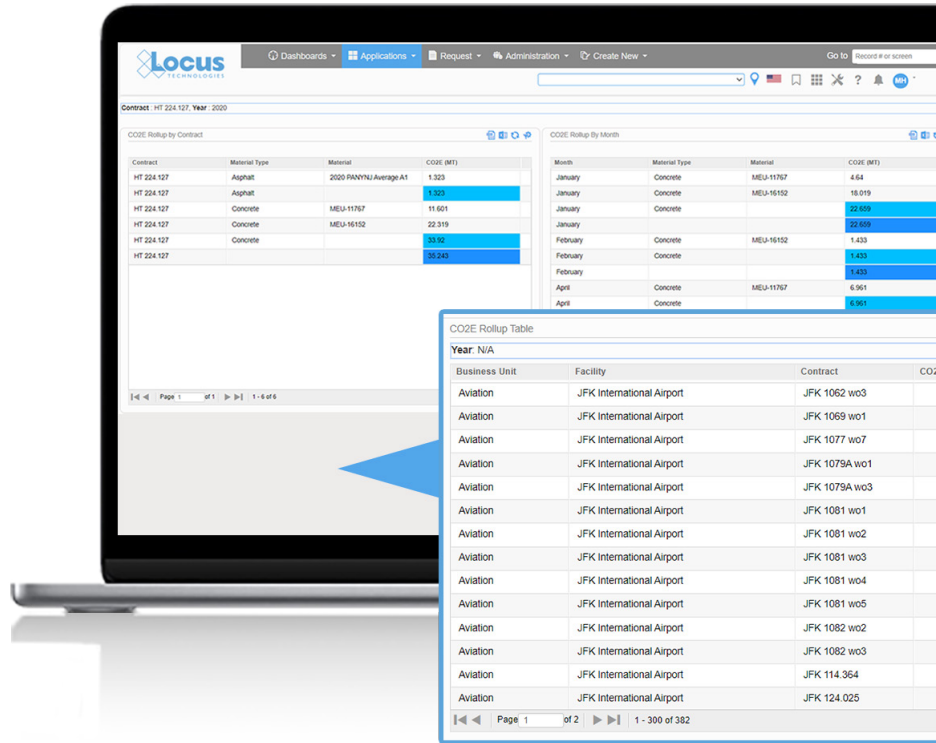
Accurately calculate and track **scope 3 embodied carbon** emissions.

Easily manage **1 or 100+ projects** within a secure SOC 2 Type 2 verified cloud-based, mobile-friendly interface.

Derive accurate carbon footprint calculations based on **actual field data, not estimates**.

Save time by **simplifying** tedious conversions and calculations.

Harmonize reporting with **Buy Clean, LEED, Envision, and GSA programs** for clean construction and credit tracking.



## Key Capabilities

- ◆ Aggregate all relevant information in one system, including: contracts, permit requirements, machinery, stakeholders, sites, emissions, site surveys, and other environmental monitoring for construction programs.
- ◆ Manage all Environmental Product Declaration (EPD) data for every carbon-intensive material that enters the construction site, from steel and glass products to concrete mix constituents, Portland Cement, Supplementary Cementitious Materials (SCMs), coarse and fine aggregates.
- ◆ Calculate the actual CO<sub>2</sub>e for the project based on EPD data, electronic weight and site delivery tickets, and the verified quantities of incoming construction materials.
- ◆ In addition to the embodied carbon, track the impacts of the construction and “end of life” stages, including diesel and gasoline equipment, fence-line particulate concentrations, real-time noise, site water, fuel, and electricity consumption, and demolition and renovation activities like blasting, grinding, cleaning, and hauling.
- ◆ Calculate the construction waste (hazardous and universal) that gets hauled to landfills, delivered to incinerators, or diverted to recycling centers, and track the circularity of construction materials.
- ◆ Generate XLS, XML, or PDF compliance reports to send to third parties for Envision, Buy Clean, and LEED credentials.

Organize your environmental information in the cloud

650-960-1640 | [info@locustec.com](mailto:info@locustec.com) | [locustec.com](http://locustec.com)